



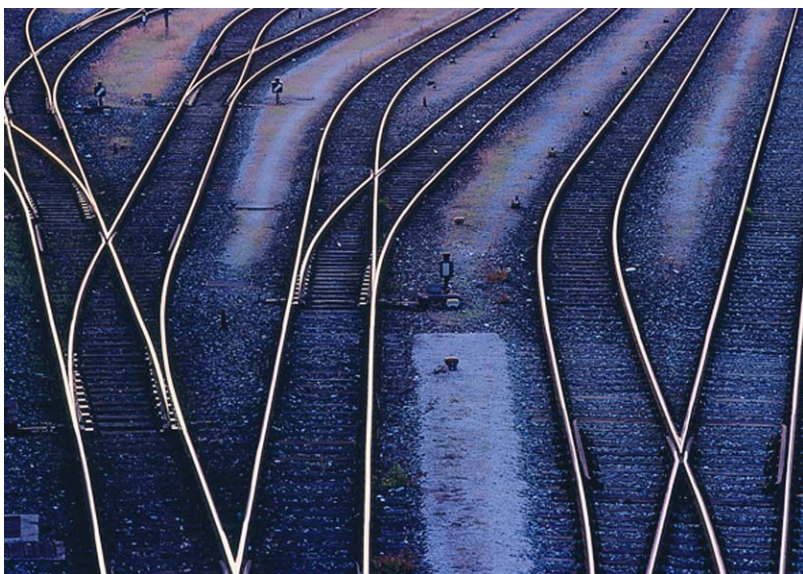
Gateway to European Rail Infrastructure

Rail Net Europe

RailNetEurope – Presentation

October 2006

RailNetEurope is a commercial Association of European Infrastructure Managers – to promote international railway business.



Main Aim

- Support Railway Undertakings in international business
- Increase efficiency of the Rail Infrastructure Managers processes
- Therefore, RNE
 - Provides information on the European Railway Infrastructure
 - Harmonises Infrastructure services, tools and processes
 - Improves of quality of rail services

31 Infrastructure Managers have joined RNE – acting as one joint company within the field of European rail traffic.



Set up

- Organised as Association under Austrian law
- Established since January 2004 with headquarters in Vienna
- Membership at different levels
 - Full membership
 - Associated membership
 - Observer
- Financed exclusively by membership fees

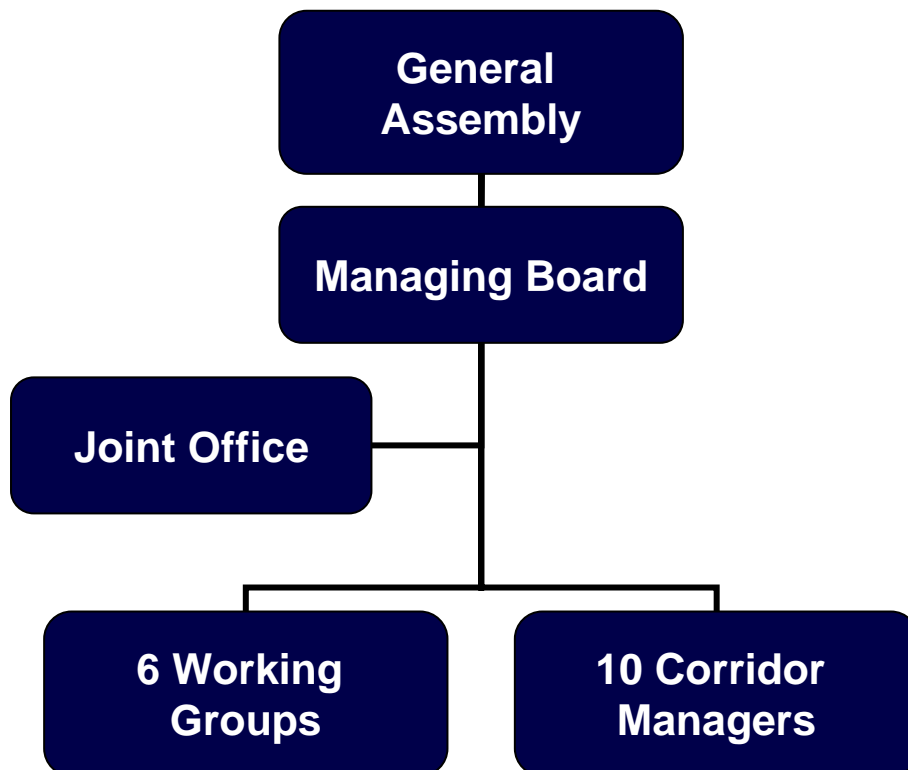
RNE members today cover 24 European countries and all main rail corridors.



Market reach

- RNE members serve around 235.000 km
- Focussing the main European rail corridors
- RNE members take care for around 150 RUs with international traffic in freight and around 50 in passenger business (in 2006)

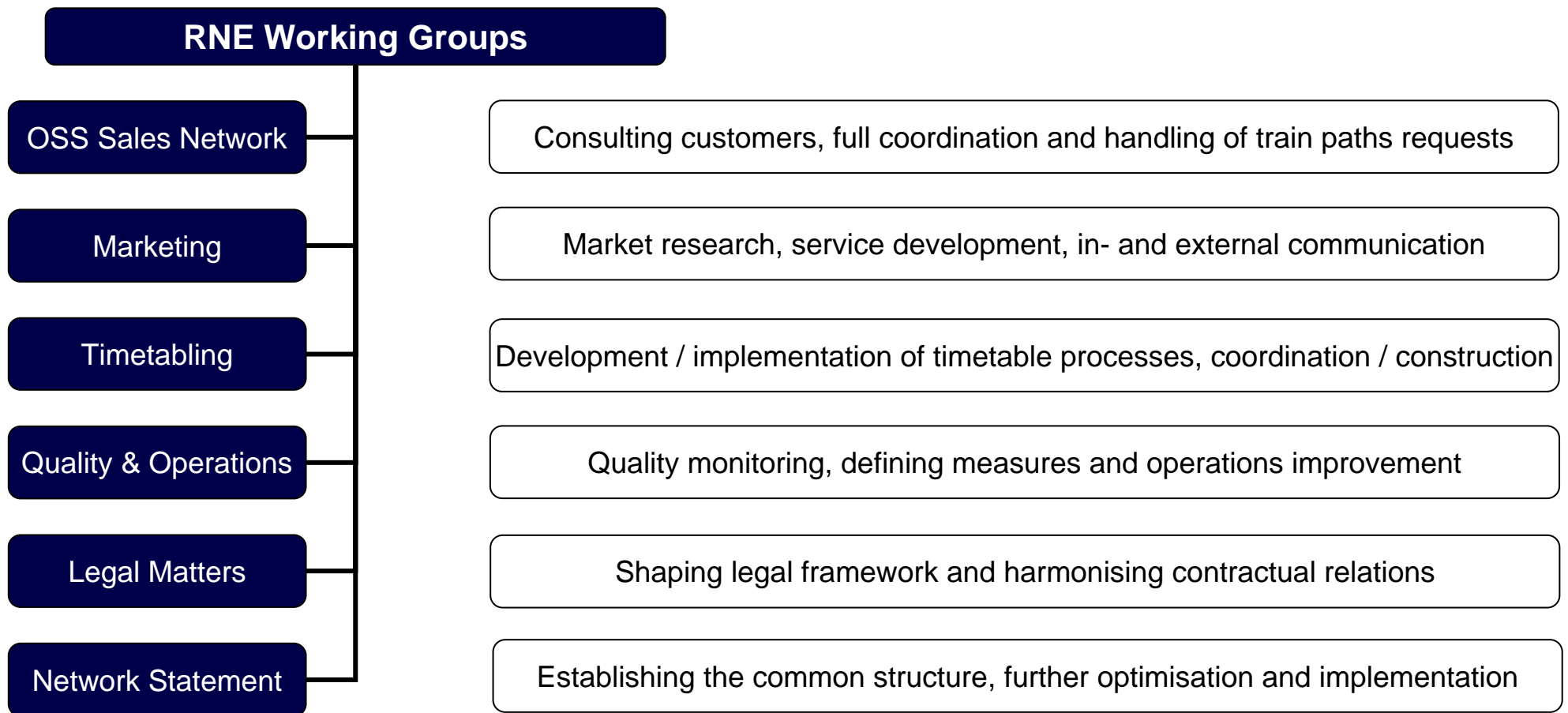
Working Structure



General structure

- RNE General Assembly (GA) sets frame for common business
- Managing Board of 5 GA representatives together with Joint Office in Vienna manages daily business
- Dedicated workforces in Working Groups and on Corridor Basis
- Around 250 people active within RNE

Working Groups



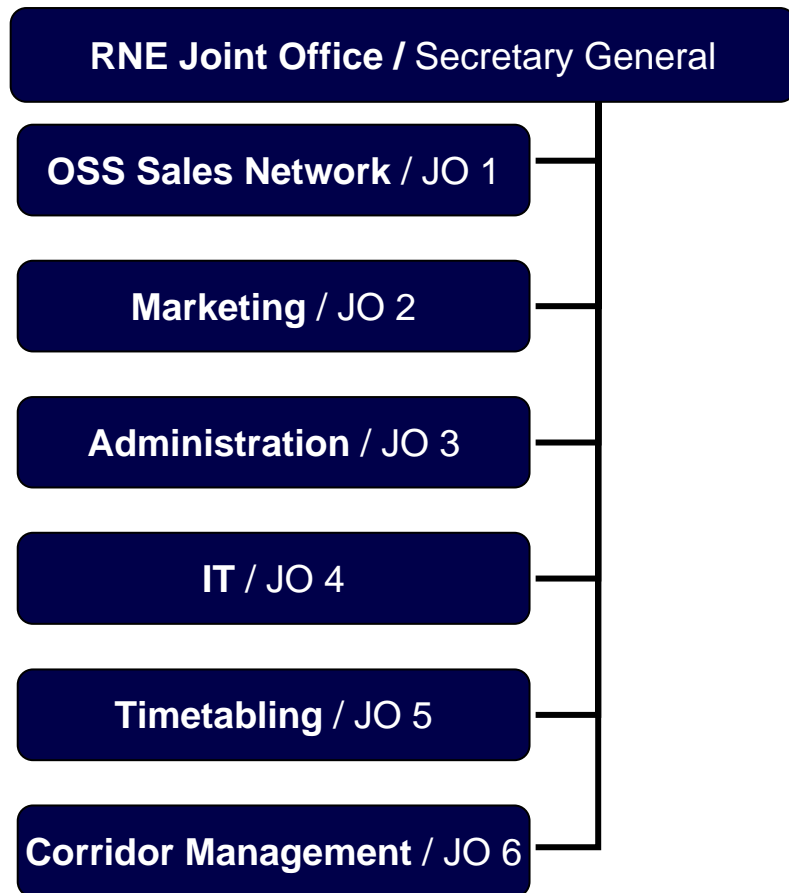
RNE Corridor Organisation – new corridor to Eastern and Southern Europe



New RNE Corridor

- Focusing on the markets of Hungary, Romania and Bulgaria with links to Greece and Turkey
- In development
- Corridor Manager from CFR

The Joint Office



Joint Office Structure & Tasks

- Supports, coordinates the RNE activities
- The set up reflects the main functions of RNE
- Staff: experts provided by the RNE members
- Headed by Secretary General
- Business Language is English

Contact:

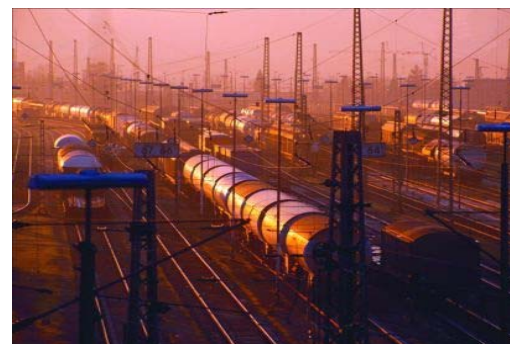
RailNetEurope Joint Office, Annagasse 12 / 5, A – 1010 Wien
mailbox@rne.at

Tel: +43 1 907 62 72 10 / Fax: +43 1 907 62 72 90

Main target group: Railway Undertakings with international business.

- Main target group are Railway Undertakings
- With international business
 - Freight
 - Passenger

- “Authorised Applicants” are entering the business
 - Companies being not RUs but asking for rail infrastructure capacity to reserve for their transport volumes



OSS have been set up as a dedicated sales organisation - consulting international customers and coordinating their train paths requests along the whole journey.



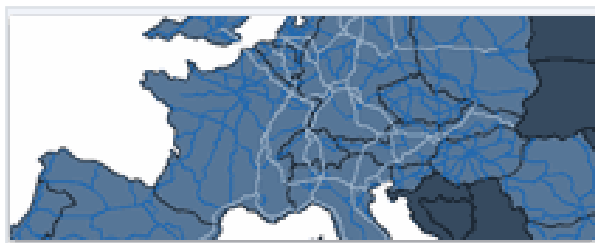
One-Stop-Shops consult customers

- The central point of customer contact of RNE
- Dedicated human resources to international business,
- Consulting and coordination
- Available at almost all RNE members
- Free of charge

Benefit for Customers

- Easy and fast access to all products and services of RNE members
- Neutral & confidential
- Less workload

RNE provides quick and easy access to commercial and strategic information via www.railneteuropa.com – website analysis prove high acceptance.



Country Information

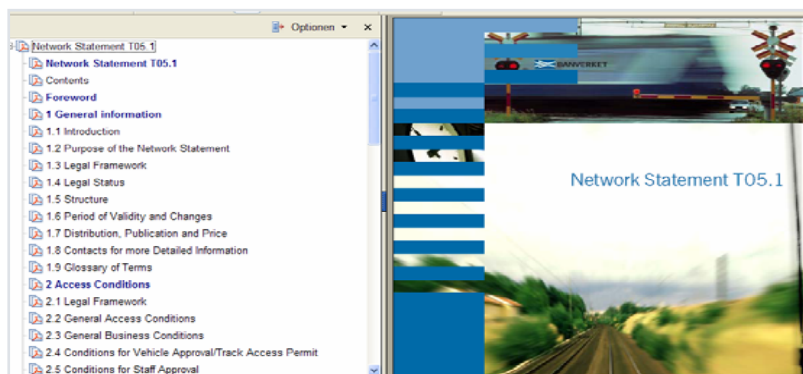
- Serves achieving a first and sound overview on general country and IM related information, contact points and also on individual access conditions of the RNE members.



Corridor Information

- Provides strategic information on the main European rail corridors, set up by the RNE Corridor Managers 24 months before change of timetable.

RNE Information tools promote transparency and easy access.



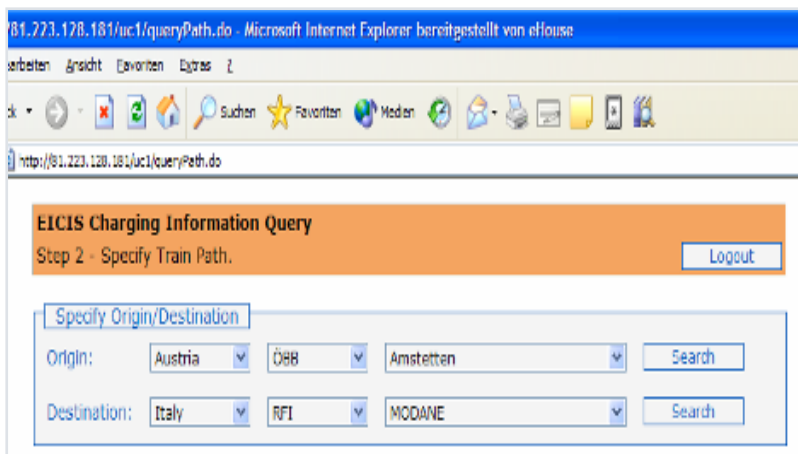
Network Statements

- Provide detailed and reliable in-depth information on specific commercial and technical parameters of the rail networks of each RNE member.
- RNE harmonised the structure and the common layout for all members.
- Customer prove high acceptance and satisfaction

Further developments:

- evaluation of corridor Network Statements

RNE Information tools promote transparency and easy access.



The screenshot shows a web browser window with the URL `http://81.223.128.181/uc1/queryPath.do`. The page title is "EICIS Charging Information Query" and the current step is "Step 2 - Specify Train Path." There is a "Logout" button in the top right corner. The main form is titled "Specify Origin/Destination" and contains two rows of input fields. The first row is for the origin, with dropdown menus for "Austria", "ÖBB", and "Amstetten", followed by a "Search" button. The second row is for the destination, with dropdown menus for "Italy", "RFI", and "MCDANE", followed by a "Search" button.

EICIS

- Fast pricing estimation on international relations.
- Works as web based umbrella for RNE members pricing systems
- Basis for further developments (final prices).
- Free of charge for users.

Further developments:

- Full coverage of RNE members
- Optimisation of data quality

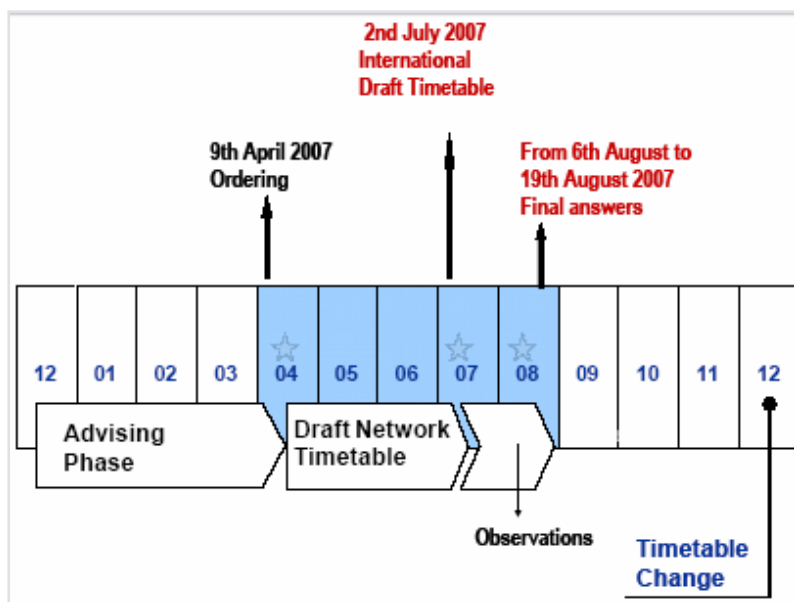
RNE has introduced commercial documents harmonised on international basis.

RNE Contracts for customers

- *Contract of Use* for all RNE members.
 - Statement on administrative, financial and general conditions of infrastructure use.
 - Agreement between IMs and the RU - one single contract between the many IMs concerned and the RU or a grouping of RUs for international traffic.
 - Simplification of the necessary contractual procedures to operate international rail transport.

- *Framework Agreement* for reserving capacity on several periods.
 - To guarantee capacities in the view of the interests of the RU and the IM.
 - A new way to allocate capacities
 - Optional agreement with a validity for more than one timetable period.

RNE has harmonised the core processes for international timetabling.



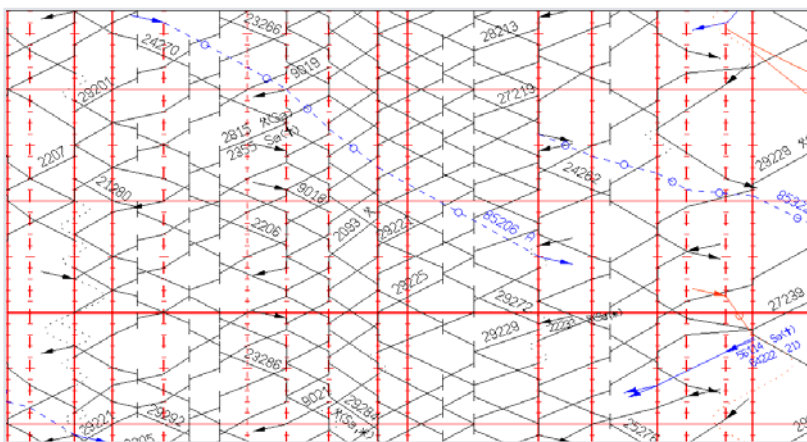
Harmonised processes for int. timetabling

- RNE has set up a process handbook for international timetabling
- It describes all timetabling related processes from $x-24$ to $x+12$
- All major deadlines for int. timetabling are harmonised across RNE members.
- Harmonised train paths request form

Major Benefits for RUs

- Transparency along the whole process
- Easier ordering process
- Reduced time gaps

RNE has harmonised train paths services for international timetabling.



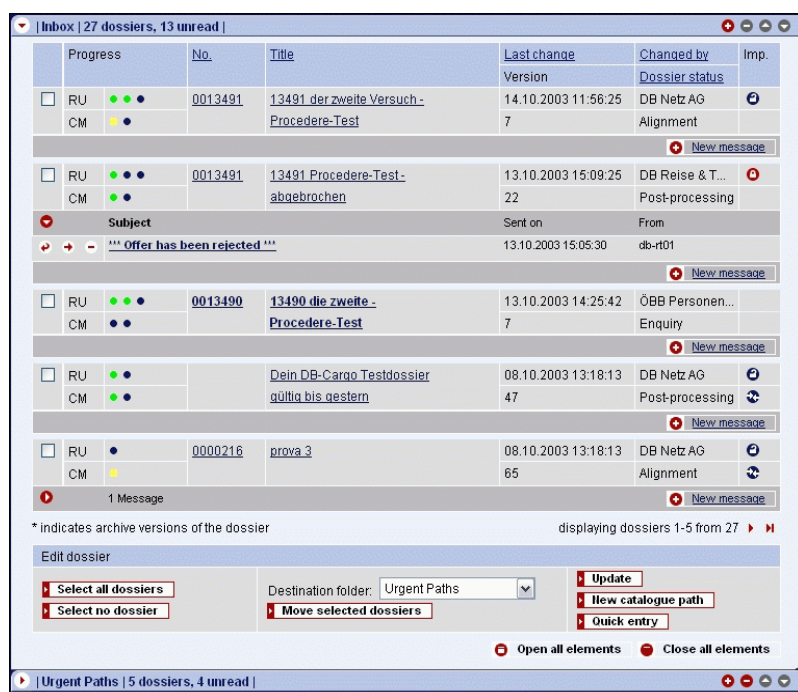
Common approach to Pre-Constructed Paths

- RNE has produced a guideline to pre-constructed paths. It defines the handling of system paths, catalogue paths and show paths.

Benefit for RUs:

- Standardised concept of providing pre-constructed paths across RNE members.
- Available at shortest notice – increasing flexibility for short term requests.
- Increasing transparency on spare capacity, quality parameters

All RNE members will provide Pathfinder to increase efficiency and transparency of timetable coordination.



Pathfinder

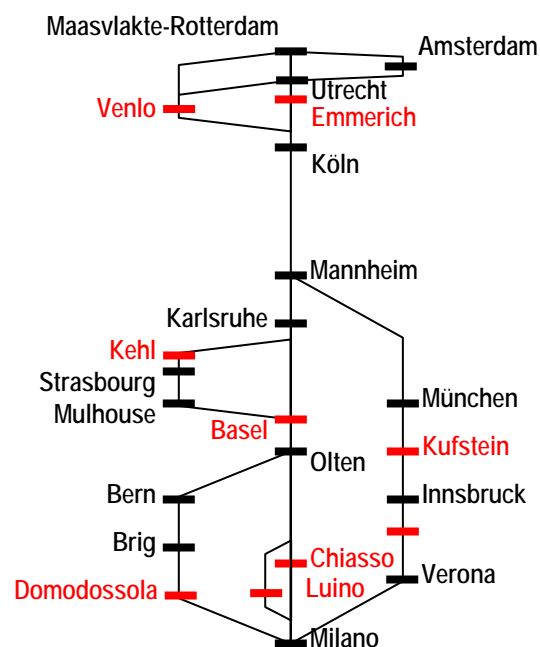
- Web based communication system for optimisation of international train path coordination.
- Improving efficiency of international time tabling and guarantees transparency throughout the process.
- Free of charge from 2006 for users.
- In future PF should be used as ordering tool for catalogue paths (short term)

IT Tools in development



<http://www.europtirails.com>

RNE engages in EUROPTIRAILS.



EUROPTIRAILS Pilot Corridors

EUROPTIRAILS

- Concept
 - System for international traffic management regarding information, monitoring and path assembly
- Goal
 - Reduce delays on international corridors
 - Improve quality of service
 - Optimise the capacity offer
 - Introduce new information services, e.g. ETA
- Members today: RFF, RFI, DB Netz, SBB, ÖBB, ProRail, Systra
- RNE promotes the systems and is evaluating host role

EUROPTIRAILS

BACK UP

EUROPTIRAILS

- Concept
 - Development of a system for international rail traffic management
 - supports traffic management on a high level
 - monitors international trains from origin to destination
 - does not impact safety
 - has minimal impact on legacy systems
 - uses existing, standardised data exchange protocol (UIC 407-1)
 - Supported by European Union, because of its contribution to ERTMS and interoperability
 - Focuses on freight traffic
 - Passenger traffic can easily be included

EUROPTIRAILS

BACK UP

EUROPTIRAILS 3 layer model

Information model



Real-time information exchange for each corridor of actual running of trains

Monitoring model



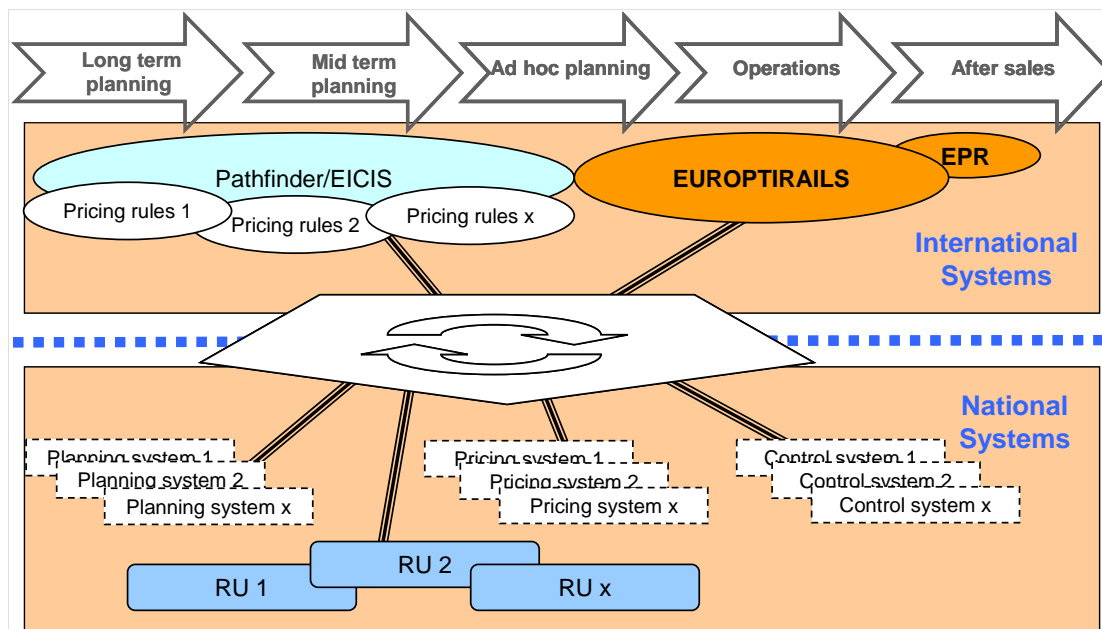
Data collection for performance analyses. Delivery of performance reports, wie pf mit betriebstrassen entweder catalogue trasse oder kurzfristige trassencoordination via dispatching section by section: leida s

Path assembly model



Composition of train paths. Support of negotiation between IM's about alternative train paths for delayed or re-routed trains.
Coordination tool for ad hoc paths, either taking use of pre-constructed paths or using this platform for ad hoc paths dispatching coordination section by section of the involved traffic control centres.

Generation of an IT Platform which links international and national IT systems.



Approach

- Shape an IT umbrella system which enables connections of national and international systems.
- Avoid development of nationally and internationally isolated IT solutions.
- Coordination in line with SEDP and TAF/TSI is required.

Benefit for RU / IM

- Better / harmonised processes
- Cost savings
- Common IT platform as starting point for common innovations

Basic Achievements of RNE

- RUs today have increased transparency on all European IM related issues (pricing, access)
- RUs are having the OSS as a neutral consulting and coordination partner for their international business aims
- International timetabling processes across all RNE members are synchronised, as part of them all major deadlines now are harmonised.
- RUs will be provided with pre-constructed paths of higher and customer oriented quality; as a result short term train paths requests can be served better and more flexible.

RNE enhances the dialogue with customers and enlarges its activities on operations.

- Further process development together with customers
- Realisation of an ad-hoc paths pilot (5 days maximum for responses)
- Stronger focus on issues regarding improvement within European operations management
 - Europtirails
 - European Performance Regime
- Implementation of a European IT Platform, considering Pathfinder, EICIS and others
- Further promotion of the RNE corridor organisation
- Evaluation of product-price innovations on international corridors
- European GTC for infrastructure usage together with CIT, EIM and CER

Business Partners

Close dialogue to expand the business scope.



**All information and contact
details can be found at**

www.railneteurope.com

**THANK YOU VERY MUCH
FOR YOUR ATTENTION!**